

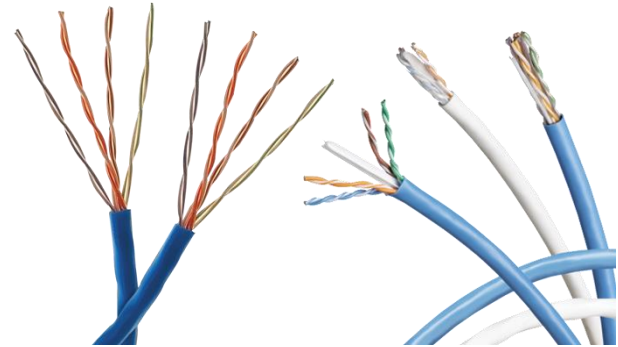


Product Lens

a materials health assessment

COMPANY AND PRODUCT INFO

Issued to	Belden
Description	DataTwist® 3600, 2400, 1200, 6, & 5e; Riser Rated Horizontal cable, UTP, 2 & 4 pair, Non-bonded Pair
For the Products	Part Numbers: 1212xxx, 2412xxx, 3612xxx, 1242Axxx, 1583Axxx, 5663U5xxx, 5663U6xxx, LAN6Rxxx
Certification Period	December 2016- December 2018
Assessor	MBDC basis methodology v3.1*



Qualifications

- LEED BPDO Credit: Material Ingredients Option 1 Qualifies for as 1 product
- LEED BPDO Credit: Material Ingredients Option 2 Qualifies for 100% of cost

Other Achievements



MATERIALS / INGREDIENTS INFORMATION

Disclosure Level: 100 ppm 1000 ppm

The following table represents the top 98% of the material ingredient disclosure and ratings. For the full ingredient disclosure information, please see the table on the reverse side.

Materials	Result			
	Supply Chain/ MFG	Install	Use	End of Use
Copper	Yellow	Green	Green	Yellow
PVC	I,D	Yellow	Yellow	I,D
Polyolefin 1	Green	Green	Green	Green
Flame Retardant	Yellow	Yellow	Yellow	Yellow
Polyolefin 2	Green	Green	Green	Green
FR Plasticizer	I,D	Yellow	Yellow	I,D
Flame Retardant	I,D	Yellow	Yellow	I,D
Plasticizer	Black	Black	Black	Black
Flame Retardant	Black	Black	Black	Black

Exposure Indicator

D = Dermal, Skin
I = Inhalation, air
O = Oral, mouth

*No Indicator means no potential exposure scenario identified

Color Ratings

Green	Low or mild hazard identified and/or potential exposure
Yellow	Moderate hazard identified and/or potential exposure
Red	Problematic concern found. The combination of the hazard and potential exposure leads to some caution for some uses and/or applications.
Grey	Cannot be fully assessed due to either lack of complete formulation, or lack of toxicological information for one or more ingredients.
Black	Highly problematic material containing one or more chemicals classified as CMR and having a plausible route of exposure.

Go to ul.com/spg to view the full, detailed materials ingredient list

www.belden.com

Sustainability@belden.com

1-800-BELDEN1



*Methodology based on Cradle to Cradle Certified™ Product Material Health Assessment Methodology v3.1



Product Lens

a materials health assessment

Material	CAS Number	Role	%					End of Use	Comment
				MFG	Install	Use			
Copper	7440-50-8	Conductor	47-56					Highly toxic to aquatic organisms; however, this material is acceptable for use in all phases due to limited exposure opportunity to biosphere.	
PVC	9002-86-2	Jacket	12.5-15.0	I.D			I.D	Lifecycle concerns around use of halogenated polymers.	
Polyolefin 1	Proprietary	Insulation	10.3-13.0					Little to no risk across all product phases	
Flame Retardant	Proprietary	Jacket	8.5-10.5					Skin sensitization and aquatic toxicity concerns, however, should be acceptable across all product stages.	
Polyolefin 2	Proprietary	Filler/ Colorant	0-6.5					Little to no risk across all product phases	
FR Plasticizer	Proprietary	Jacket	3.8-4.5	I.D			I.D	Lifecycle concerns around use of halogenated polymers.	
Flame Retardant	Proprietary	Filler	0-2.7	I.D			I.D	Lifecycle concerns around use of halogenated polymers.	
Plasticizer	Proprietary	Jacket	2.0-2.5					CMR - Reproductive toxin	
Flame Retardant	Proprietary	Jacket	1-1.5					Suspected human carcinogen (CA Prop 65, IARC Group 2B, MAK Group 2)	
Proprietary	Proprietary	Jacket	0.8-1.1					Little to no risk across all product phases	
Proprietary	Proprietary	Jacket/ Colorant	0.1-0.9					Little to no risk across all product phases	
Flame Retardant	Proprietary	Filler	0-0.5					CMR - Reproductive toxin (on CA Prop 65)	
Plasticizer	Proprietary	Jacket	0-0.4					Little to no risk across all product phases	
PET	25038-59-9	Ripcord	0.2-0.3					Little to no risk across all product phases	
Proprietary	Proprietary	Jacket	0.2-0.3	D				Severe damage to eyes possible during manufacturing phase; little to no risk across all other use phases	
Proprietary	Proprietary	Jacket	0.2-0.3					Little to no risk across all product phases	
Proprietary	Proprietary	Jacket/ Colorant	0.1-0.3					Little to no risk across all product phases	
Lubricant	Proprietary	Jacket/ Colorant	0.1-0.2					Little to no risk across all product phases	
Proprietary	Proprietary	Jacket/ Colorant	0-0.2					Little to no risk across all product phases	
Plasticizer	Proprietary	Jacket/ Colorant	0-0.2					Little to no risk across all product phases	
Lubricant	Proprietary	Filler	0-0.2					Little to no risk across all product phases	
Proprietary	Proprietary	Jacket	0.1-0.2					Little to no risk across all product phases	
Proprietary	Proprietary	Colorant	0-0.2					CMR - suspected endocrine disruptor and potential reproductive toxicant. (CA Prop 65)	
Proprietary	Proprietary	Jacket	>0.1					Little to no risk across all product phases	
Proprietary	Proprietary	Jacket	>0.1					Little to no risk across all product phases	
Proprietary	Proprietary	Colorant	>0.1					Little to no risk across all product phases	
Pigment	Proprietary	Colorant	>0.1					Can catalyze dioxin formation during incineration of PVC	
Proprietary	Proprietary	Colorant	>0.05	I.D			I.D	Lifecycle concerns around use of halogenated polymers.	
Proprietary	Proprietary	Insulation	>0.05					Moderate aquatic toxicity and bioaccumulation concerns	
Proprietary	Proprietary	Colorant	>0.05	I.D			I.D	Lifecycle concerns around use of halogenated polymers.	
Miscellaneous Compounds	unknown	Colorant	>0.05					Unknown	
Proprietary	Proprietary	Insulation	>0.05					Little to no risk across all product phases	
Proprietary	Proprietary	Jacket	>0.05					Skin sensitization and aquatic toxicity concerns, however at this concentration and in this use should be acceptable across all product stages.	
Proprietary	Proprietary	Filler	>0.05					Little to no risk across all product phases	
Proprietary	Proprietary	Colorant	>0.05					Little to no risk across all product phases	
Proprietary	Proprietary	Colorant	>0.05					Little to no risk across all product phases	
Lubricant	Proprietary	Jacket	>0.05					Little to no risk across all product phases	

	Low or mild hazard identified and/or potential exposure
	Moderate hazard identified and/or potential exposure
	Problematic concern found. The combination of the hazard and potential exposure leads to some caution for some uses and/or applications.
	Cannot be fully assessed due to either lack of complete formulation, or lack of toxicological information for one or more ingredients.
	Highly problematic material containing one or more chemicals classified as CMR and having a plausible route of exposure.

