

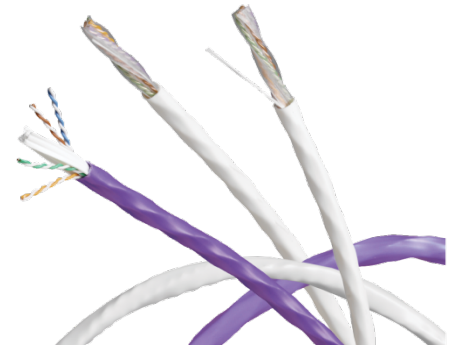


Product Lens

a materials health assessment

COMPANY AND PRODUCT INFO

Issued to	Belden
Description	10GX, LSZH Rated Category 6A, UTP, 4 Pair
For the Products	Part Numbers: 10GX24xxx, 10GX44xxx
Certification Period	November 2016- November 2018
Assessor	MBDC basis methodology v3.1*



Qualifications

- LEED BPDO Credit: Material Ingredients Option 1 Qualifies for as 1 product
- LEED BPDO Credit: Material Ingredients Option 2 Qualifies for 100% of cost

Other Achievements



MATERIALS / INGREDIENTS INFORMATION

Disclosure Level: 100 ppm 1000 ppm

The following table represents the top 97% of the material ingredient disclosure and ratings. For the full ingredient disclosure information, please see the table on the reverse side.

Materials	Result			
	Supply Chain/ MFG	Install	Use	End of Use
Copper	Yellow	Green	Green	Yellow
Flame Retardant	Yellow	Green	Green	Green
Polyolefin 1	Green	Green	Green	Green
Proprietary Polymer	Yellow	Green	Green	Green
Flame Retardant	Black	Green	Green	Green
Polyolefin 2	Yellow	Green	Green	Green
Proprietary	Green	Green	Green	Green
Polyolefin 3	Green	Green	Green	Green
Polyolefin 4	Yellow	Green	Green	Green

Exposure Indicator

D = Dermal, Skin
I = Inhalation, air
O = Oral, mouth

*No Indicator means no potential exposure scenario identified

Color Ratings

Green	Low or mild hazard identified and/or potential exposure
Yellow	Moderate hazard identified and/or potential exposure
Red	Problematic concern found. The combination of the hazard and potential exposure leads to some caution for some uses and/or applications.
Grey	Cannot be fully assessed due to either lack of complete formulation, or lack of toxicological information for one or more ingredients.
Black	Highly problematic material containing one or more chemicals classified as CMR and having a plausible route of exposure.

Go to ul.com/spg to view the full, detailed materials ingredient list

www.belden.com

Sustainability@belden.com

1-800-BELDEN1



*Methodology based on Cradle to Cradle Certified™ Product Material Health Assessment Methodology v3.1



CERTIFIED

PRODUCT LENS MATERIALS
TRANSPARENCY AND
DISCLOSURE.
VIEW SPECIFIC INGREDIENTS
AND EVALUATIONS:
UL.COM/PL

Product Lens

a materials health assessment

Material	CAS Number	Role	%	MFG	Install	Use	End of Use	Comment
Copper	7440-50-8	Conductor	43-48%					Highly toxic to aquatic organisms; however, this material is acceptable for use in all phases due to limited exposure opportunity to biosphere.
Flame Retardant	Proprietary	Jacket	23-26%					Some chronic toxicity concerns, but little risk as used in this product.
Polyolefin 1	Proprietary	Insulation	11-13%					Little to no risk across all product phases
Polymer	Proprietary	Jacket	10-12%					Assuming low residual monomer levels, little to no risk during installation, use, and end of life.
Flame Retardant	Proprietary	Jacket	1-1.5%					CMR - reproductive toxin.
Polyolefin 2	Proprietary	Jacket	1-1.5%					Assuming low residual monomer levels, little to no risk during installation, use, and end of life.
Proprietary	Proprietary	Jacket	1-1.5%					Little to no risk across all product phases
Polyolefin 3	Proprietary	Jacket/ Colorant	0.6-0.8%					Little to no risk across all product phases
Polyolefin 4	Proprietary	Jacket	0.6-0.8%					Some chronic toxicity concerns, but little risk as used in this product.
Proprietary	Proprietary	Jacket	0.4-0.6%					Little to no risk across all product phases
Proprietary	Proprietary	Jacket	0.4-0.6%					Little to no risk across all product phases
Proprietary	Proprietary	Jacket	0.2-0.3%					Little to no risk across all product phases
Proprietary	Proprietary	Jacket	0.2-0.3%					Little to no risk across all product phases
PET	25038-59-9	Ripcord	0.1-0.2%					Little to no risk across all product phases
Proprietary	Proprietary	Insulation	>0.1					Little to no risk across all product phases
Proprietary	Proprietary	Insulation	>0.1					Little to no risk across all product phases
Proprietary	Proprietary	Insulation	>0.1					Little to no risk across all product phases
Proprietary	Proprietary	Insulation	>0.05					Little to no risk across all product phases
Proprietary	Proprietary	Insulation	>0.05					Little to no risk across all product phases
Proprietary	Proprietary	Insulation	>0.05					Little to no risk across all product phases
Proprietary	Proprietary	Insulation	>0.05					Little to no risk across all product phases
Pigment White 6	13463-67-7	Colorant	>0.05					Little to no risk across all product phases
Polyolefin 4	9002-88-4	Colorant	>0.05					Little to no risk across all product phases
Proprietary	Proprietary	Colorant	>0.05					Little to no risk across all product phases
Proprietary	Proprietary	Colorant	>0.05					Little to no risk across all product phases
Proprietary	Proprietary	Colorant	>0.05					Little to no risk across all product phases
Proprietary	Proprietary	Colorant	>0.05					Can catalyze dioxin formation during incineration of PVC

	Low or mild hazard identified and/or potential exposure
	Moderate hazard identified and/or potential exposure
	Problematic concern found. The combination of the hazard and potential exposure leads to some caution for some uses and/or applications.
	Cannot be fully assessed due to either lack of complete formulation, or lack of toxicological information for one or more ingredients.
	Highly problematic material containing one or more chemicals classified as CMR and having a plausible route of exposure.

