

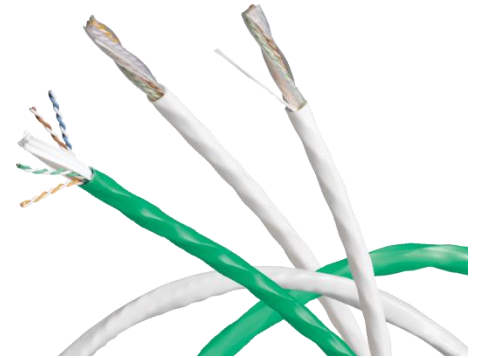


Product Lens

a materials health assessment

COMPANY AND PRODUCT INFO

Issued to	Belden
Description	10GX™, Category 6A, Plenum Rated Horizontal Cable, UTP, 4 Pair, CMP Bonded and non-bonded Pair
For the Products	Part Numbers: 10GX13xxx, 10GX33xxx
Certification Period	November 2016- November 2018
Assessor	MBDC basis methodology v3.1*



Qualifications

- LEED BPDO Credit: Material Ingredients Option 1 Qualifies for as 1 product
- LEED BPDO Credit: Material Ingredients Option 2 Qualifies for 100% of cost

Other Achievements



MATERIALS / INGREDIENTS INFORMATION

Disclosure Level: 100 ppm 1000 ppm

The following table represents the top 98% of the material ingredient disclosure and ratings. For the full ingredient disclosure information, please see the table on the reverse side.

Materials	Result			
	Supply Chain/ MFG	Install	Use	End of Use
FEP	I,D			I,D
Copper				
PVC	I,D			I,D
Proprietary				
Plasticizer				
Proprietary				
Proprietary				
Proprietary				
Flame Retardant				

Exposure Indicator

D = Dermal, Skin
I = Inhalation, air
O = Oral, mouth

*No Indicator means no potential exposure scenario identified

Color Ratings

	Low or mild hazard identified and/or potential exposure
	Moderate hazard identified and/or potential exposure
	Problematic concern found. The combination of the hazard and potential exposure leads to some caution for some uses and/or applications.
	Cannot be fully assessed due to either lack of complete formulation, or lack of toxicological information for one or more ingredients.
	Highly problematic material containing one or more chemicals classified as CMR and having a plausible route of exposure.

Go to ul.com/spg to view the full, detailed materials ingredient list

www.belden.com

Sustainability@belden.com

1-800-BELDEN1



*Methodology based on Cradle to Cradle Certified™ Product Material Health Assessment Methodology v3.1



CERTIFIED

PRODUCT LENS MATERIALS
TRANSPARENCY AND
DISCLOSURE.
VIEW SPECIFIC INGREDIENTS
AND EVALUATIONS:
UL.COM/PL

Product Lens

a materials health assessment

Material	CAS Number	Role	%					Comment
				MFG	Install	Use	End of Use	
FEP	25067-11-2	Insulation/ Filler/ Colorants	38-40%	I,D			I,D	Lifecycle concerns around use of halogenated polymers.
Copper	7440-50-8	Conductor	32-34%					Highly toxic to aquatic organisms; however, this material is acceptable for use in all phases due to limited exposure opportunity to biosphere.
PVC	9002-86-2	Jacket	11-12%	I,D			I,D	Lifecycle concerns around use of halogenated polymers.
Proprietary	Proprietary	Jacket	8-9%					Some chronic toxicity concerns, but little risk as used in this product.
Plasticizer	Proprietary	Jacket	2-3%					Acceptable for use in all product phases
Proprietary	Proprietary	Jacket	1.0-1.5%					Reproductively toxic
Proprietary	Proprietary	Jacket	1.0-1.5%					Reproductive toxin
Proprietary	Proprietary	Jacket	1.0-1.5%					Little to no risk across all product phases
Flame Retardant	Proprietary	Jacket	1.0-1.5%					Little to no risk across all product phases
Proprietary	Proprietary	Jacket	0.5-0.8%					Little to no risk across all product phases
Proprietary	Proprietary	Jacket	0.3-0.5%					Little to no risk across all product phases
Proprietary	Proprietary	Jacket	0.1-0.2%					Severe damage to eyes possible during manufacturing phase; little to no risk across all other use phases
Proprietary	Proprietary	Jacket	0.1-0.2%					High aquatic toxicity so care should be taken during beginning and end phases to keep out of biosphere.
PET	25038-59-9	Ripcord	0.1-0.2%					Little to no risk across all product phases
Proprietary	Proprietary	Jacket	>0.1%					Little to no risk across all product phases
Proprietary	Proprietary	Jacket	>0.1%					Little to no risk across all product phases
Proprietary	Proprietary	Jacket	>0.1%					Little to no risk across all product phases
Proprietary	Proprietary	Colorant	>0.05%					Little to no risk across all product phases
Proprietary	Proprietary	Jacket	>0.05%					Little to no risk across all product phases
Proprietary	Proprietary	Jacket	>0.05%					Little to no risk across all product phases
Proprietary	Proprietary	Colorant	>0.05%					Suspected endocrine disruptor and potential reproductive toxicant
Proprietary	Proprietary	Colorant	>0.05%					Carcinogen
Proprietary	Proprietary	Colorant	>0.05%	I,D			I,D	Lifecycle concerns around use of halogenated polymers.

	Low or mild hazard identified and/or potential exposure
	Moderate hazard identified and/or potential exposure
	Problematic concern found. The combination of the hazard and potential exposure leads to some caution for some uses and/or applications.
	Cannot be fully assessed due to either lack of complete formulation, or lack of toxicological information for one or more ingredients.
	Highly problematic material containing one or more chemicals classified as CMR and having a plausible route of exposure.

