

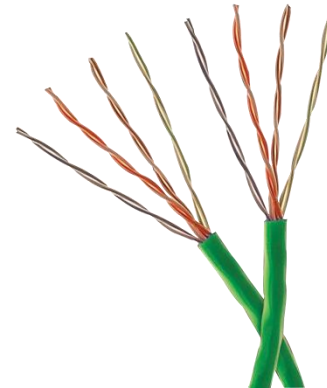


# Product Lens

a materials health assessment

## COMPANY AND PRODUCT INFO

<b>Issued to</b>	<b>Belden</b>
<b>Description</b>	DataTwist® 1200 & 5e, Plenum Rated Cable Category 5e, UTP, 2 & 4 Pair, and Banana Peel, CMP
<b>For the Products</b>	Part Numbers: 1590Axxx, 1701Axxx, 1701S6xxx, 1703Axxx
<b>Certification Period</b>	December 2016- December 2018
<b>Assessor</b>	<b>MBDC</b> basis methodology v3.1*



## Qualifications

- LEED BPDO Credit: Material Ingredients Option 1  Qualifies for as 1 product
- LEED BPDO Credit: Material Ingredients Option 2  Qualifies for 100% of cost

## Other Achievements



## MATERIALS / INGREDIENTS INFORMATION

Disclosure Level: 100 ppm  1000 ppm

The following table represents the top 98% of the material ingredient disclosure and ratings. For the full ingredient disclosure information, please see the table on the reverse side.

Materials	Result			
	Supply Chain/ MFG	Install	Use	End of Use
Copper				
FEP	I,D			I,D
PVC	I,D			I,D
Flame Retardant				
Plasticizer				
Proprietary				
Flame Retardant				
Proprietary				
Proprietary				
Proprietary				
PET				

### Exposure Indicator

D = Dermal, Skin
I = Inhalation, air
O = Oral, mouth

\*No Indicator means no potential exposure scenario identified

### Color Ratings

	Low or mild hazard identified and/or potential exposure
	Moderate hazard identified and/or potential exposure
	Problematic concern found. The combination of the hazard and potential exposure leads to some caution for some uses and/or applications.
	Cannot be fully assessed due to either lack of complete formulation, or lack of toxicological information for one or more ingredients.
	Highly problematic material containing one or more chemicals classified as CMR and having a plausible route of exposure.

Go to [ul.com/spg](http://ul.com/spg) to view the full, detailed materials ingredient list





CERTIFIED

PRODUCT LENS MATERIALS  
TRANSPARENCY AND  
DISCLOSURE.  
VIEW SPECIFIC INGREDIENTS  
AND EVALUATIONS:  
UL.COM/PL

# Product Lens

*a materials health assessment*

Material	CAS Number	Role	%					Comment
				MFG	Install	Use	End of Use	
Copper	7440-50-8	Conductor	41-49					Highly toxic to aquatic organisms; however, this material is acceptable for use in all phases due to limited exposure opportunity to biosphere.
FEP	25067-11-2	Insulation/ Colorants	20-22.5	I,D			I,D	Lifecycle concerns around use of halogenated polymers.
PVC	9002-86-2	Jacket/ Colorant additive	11.8-15.5	I,D			I,D	Lifecycle concerns around use of halogenated polymers.
Flame Retardant	Proprietary	Jacket	8.2-10.7					Some chronic toxicity concerns, but little risk as used in this product.
Plasticizer	Proprietary	Jacket	4.2-5.6					Acceptable for use in all product phases
Proprietary	Proprietary	Jacket	1.0-1.4					Little to no risk across all product phases
Flame Retardant	Proprietary	Jacket	1.0-1.4					Little to no risk across all product phases
Proprietary	Proprietary	Jacket	0.4-0.7					Little to no risk across all product phases
Proprietary	Proprietary	Jacket	0.3-0.6					Little to no risk across all product phases
Proprietary	Proprietary	Jacket	0.3-0.6					Little to no risk across all product phases
PET	25038-59-9	Tape	0.3-0.5					Little to no risk across all product phases
Calcium Carbonate	1317-65-3	Jacket/ Colorants	0.3-0.5					Little to no risk across all product phases
Proprietary	Proprietary	Jacket	0.2-0.4	D				Severe damage to eyes possible during manufacturing phase; little to no risk across all other use phases
Proprietary	Proprietary	Jacket	0.15-0.25					High aquatic toxicity so care should be taken during beginning and end phases to keep out of biosphere.
Proprietary	Proprietary	Jacket	0.10-0.15					Suspected human carcinogen
Proprietary	Proprietary	Jacket	0.10-0.15					Acceptable for use in all product phases
Proprietary	Proprietary	Jacket	>0.1					Little to no risk across all product phases
Proprietary	Proprietary	Colorant	>0.1					Little to no risk across all product phases
Proprietary	Proprietary	Jacket	>0.1					Little to no risk across all product phases
Blue Pigment	Proprietary	Colorant	>0.05					Can catalyze dioxin formation during incineration of PVC
Proprietary	Proprietary	Jacket	>0.05					Little to no risk across all product phases

	Low or no hazard identified and/or potential exposure
	Moderate hazard identified and/or potential exposure
	Problematic concern found. The combination of the hazard and potential exposure leads to some caution for some uses and/or applications.
	Cannot be fully assessed due to either lack of complete formulation, or lack of toxicological information for one or more ingredients.
	Highly problematic material containing one or more chemicals classified as CMR and having a plausible route of exposure.

