

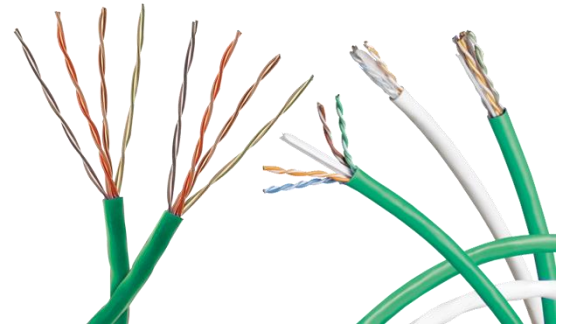


# Product Lens

a materials health assessment

## COMPANY AND PRODUCT INFO

<b>Issued to</b>	<b>Belden</b>
<b>For the Products</b>	DataTwist® 4800, 3600, 2400, 1200, 6 & 5e, Plenum Rated Category 6 & 5e, Horizontal Cable, UTP, 4 Pair, CMP
<b>Description</b>	Part Numbers: 1213xxx, 2413xxx, 3613xxx, 4813xxx, 1585Axxx, 1585Bxxx, 6663U5, 6663U6, IFLEXxxx
<b>Certification Period</b>	December 2016- December 2018
<b>Assessor</b>	<b>MBDC</b> basis methodology v3.0*



## Qualifications

- LEED BPDO Credit: Material Ingredients Option 1  Qualifies for as 1 product
- LEED BPDO Credit: Material Ingredients Option 2  Qualifies for 100% of cost

## Other Achievements



## MATERIALS / INGREDIENTS INFORMATION

The following table represents the top 95% of the material ingredient disclosure and ratings. For the full ingredient disclosure information, please see the table on the reverse side.

Materials	Result			
	Supply Chain/ MFG	Install	Use	End of Use
Copper				
FEP	I,D			I,D
PVC	I,D			I,D
Flame Retardant				
Plasticizer				
Flame Retardant	I,D			I,D
Flame Retardant				
Proprietary				
Proprietary				
Proprietary				

### Exposure Indicator

D = Dermal, Skin
I = Inhalation, air
O = Oral, mouth

\*No Indicator means no potential exposure scenario identified

### Color Ratings

	Low or mild hazard identified and/or potential exposure
	Moderate hazard identified and/or potential exposure
	Problematic concern found. The combination of the hazard and potential exposure leads to some caution for some uses and/or applications.
	Cannot be fully assessed due to either lack of complete formulation, or lack of toxicological information for one or more ingredients.
	Highly problematic material containing one or more chemicals classified as CMR and having a plausible route of exposure.

Go to [ul.com/spg](http://ul.com/spg) to view the full, detailed materials ingredient list

[www.belden.com](http://www.belden.com)

[Sustainability@belden.com](mailto:Sustainability@belden.com)

1-800-BELDEN1



\*Methodology based on Cradle to Cradle Certified™ Product Material Health Assessment Methodology v3.0



CERTIFIED

PRODUCT LENS MATERIALS  
TRANSPARENCY AND  
DISCLOSURE:  
VIEW SPECIFIC INGREDIENTS  
AND EVALUATIONS:  
UL.COM/PL

# Product Lens

a materials health assessment

Material	CAS Number	Role	%	MFG	Install	Use	End of Use	Comment
Copper	7440-50-8	Conductor	47-50					Highly toxic to aquatic organisms; however, this material is acceptable for use in all phases due to limited exposure opportunity to biosphere.
FEP	25067-11-2	Insulation	14-16	I.D			I.D	Lifecycle concerns around use of halogenated polymers.
PVC	9002-86-2	Jacket	10.5-12.5	I.D			I.D	Lifecycle concerns around use of halogenated polymers.
Flame retardant	Proprietary	Jacket	8.9-10.5					Some chronic toxicity concerns, but little risk as used in this product.
Plasticizer	Proprietary	Jacket	2.9-4.5					Little to no risk across all product phases
Flame retardant	Proprietary	Jacket	0.9-2.2	I.D			I.D	Lifecycle concerns around use of halogenated polymers.
Flame retardant	Proprietary	Jacket	0.9-2.2					Need identity of FR
Proprietary	Proprietary	Insulation	2-2.5					Little to no risk across all product phases
Proprietary	Proprietary	Insulation	1.5-2.0					Little to no risk across all product phases
Proprietary	Proprietary	Insulation	1.0-1.5					Little to no risk across all product phases
Proprietary	Proprietary	Jacket	0.30-0.90					Suspected human carcinogen (CA Prop 65, IARC Group 2B, MAK Group 2)
Proprietary	Proprietary	Jacket	0.30-0.90					little to no risk expected based on the intended use and concentration.
Proprietary	Proprietary	Insulation	0.6-0.9					Lifecycle concerns around use of halogenated polymers.
Stabilizer Mixture	Proprietary	Jacket	0.5-0.7					Severe damage to eyes possible during manufacturing phase; little to no risk across all other use phases
Proprietary	Proprietary	Insulation	0.5-0.7					Suspected human carcinogen (CA Prop 65, IARC Group 2B, MAK Group 2)
Flame retardant	Proprietary	Jacket	0.2-0.4					CMR - Reproductive toxin
Proprietary	Proprietary	Insulation	0.2-0.4					Little to no risk across all product phases
PET	25038-59-9	Ripcord	0.2-0.4					Little to no risk across all product phases
Lubricant	Proprietary	Jacket	0.1-0.2					Little to no risk across all product phases
Calcium Carbonate	1317-65-3	Colorant	>0.1					Inhalation concerns around mining/processing, but in cable production, installation, use, and end of use there is little to no risk.
Proprietary	Proprietary	Insulation	>0.1					Carcinogenic via inhalation, but acceptable once bound in the polymer matrix.
Proprietary	Proprietary	Insulation	>0.1					Little to no risk across all product phases
Proprietary	Proprietary	Insulation	>0.1					Little to no risk across all product phases
Titanium Dioxide	13463-67-7	Insulation	>0.1					Little to no risk across all product phases
Polyolefin 1	Proprietary	Colorant	>.05					Little to no risk across all product phases
Plasticizer	Proprietary	Colorant	>.05					Little to no risk across all product phases
Polyolefin 2	Proprietary	Colorant	>.05					Little to no risk across all product phases
Pigment Blue 15	147-14-8	Pigment	>.05					Can catalyze dioxin formation during incineration of PVC

	Low or mild hazard identified and/or potential exposure
	Moderate hazard identified and/or potential exposure
	Problematic concern found. The combination of the hazard and potential exposure leads to some caution for some uses and/or applications.
	Cannot be fully assessed due to either lack of complete formulation, or lack of toxicological information for one or more ingredients.
	Highly problematic material containing one or more chemicals classified as CMR and having a plausible route of exposure.

