

Faster.  
Easier.  
Better.



CAT6+ UTP Field-Terminated System

## CAT6+ Modular Cords

### Bonded-Pair Patch Cords and Nonbonded-Pair Pigtails

The CAT6+ Series of Bonded-Pair Patch Cords are made with Belden's patented robust design Bonded-Pair cables. These modular cords offer the best combination of transmission performance and physical integrity.

#### Features

- Made with small diameter Bonded-Pair cable for greater flexibility and higher density installations
- Solid conductors improve attenuation and are needed in long patch cords and pigtails

to eliminate the need for cable de-rating in open-office cabling

- Improved strain relief and a flexible boot for optimum protection in high-density installations
- Wrap-around label on each cord for easier product identification and length sorting

#### Benefits

- Exceeds TIA and ISO transmission and mechanical performance requirements
- Ordering code scheme to customize Bonded-Pair Patch Cord and Pigtail configurations



CAT6+ Bonded-Pair Patch Cord

## CAT6+ Modular Cords

Description	Belden Part Number					
	Yellow	Green	Blue	Gray	White	Black
<b>CAT6+ Patch Cord, Bonded-Pair, 4-pair, 24 AWG Solid, T568A/B-T568A/B, CMR</b>						
2 ft (0.6 m)	C601104002	C601105002	C601106002	C601108002	C601109002	C601100002
4 ft (1.2 m)	C601104004	C601105004	C601106004	C601108004	C601109004	C601100004
7 ft (2.1 m)	C601104007	C601105007	C601106007	C601108007	C601109007	C601100007
10 ft (3.0 m)	C601104010	C601105010	C601106010	C601108010	C601109010	C601100010
15 ft (4.6 m)	C601104015	C601105015	C601106015	C601108015	C601109015	C601100015
25 ft (7.6 m)	C601104025	C601105025	C601106025	C601108025	C601109025	C601100025
xxx	C601104xxx	C601105xxx	C601106xxx	C601108xxx	C601109xxx	C601100xxx

xxx = available 1 ft to 150 ft in increments of 1 ft, 20 ft and 25 ft

<b>CAT6+ Pigtail, Nonbonded-Pair, 4-pair, 24 AWG Solid, T568A-Open, CMR</b>						
15 ft (4.6 m)	–	–	C631206015	C631208015	C631209015	–
25 ft (7.6 m)	–	–	C631206025	C631208025	C631209025	–
35 ft (10.6 m)	–	–	C631206035	C631208035	C631209035	–
50 ft (15.2 m)	–	–	C631206050	C631208050	C631209050	–
xxx	–	–	C631206xxx	C631208xxx	C631209xxx	–

<b>CAT6+ Pigtail, Nonbonded-Pair, 4-pair, 24 AWG Solid, T568B-Open, CMR</b>						
15 ft (4.6 m)	–	–	C631306015	C631308015	C631309015	–
25 ft (7.6 m)	–	–	C631306025	C631308025	C631309025	–
35 ft (10.6 m)	–	–	C631306035	C631308035	C631309035	–
50 ft (15.2 m)	–	–	C631306050	C631308050	C631309050	–
xxx	–	–	C631306xxx	C631308xxx	C631309xxx	–

<b>CAT6+ Pigtail, Nonbonded-Pair, 4-pair, 24 AWG Solid, T568A-Open, CMP</b>						
15 ft (4.6 m)	–	–	C632206015	C632208015	C632209015	–
25 ft (7.6 m)	–	–	C632206025	C632208025	C632209025	–
35 ft (10.6 m)	–	–	C632206035	C632208035	C632209035	–
50 ft (15.2 m)	–	–	C632206050	C632208050	C632209050	–
xxx	–	–	C632206xxx	C632208xxx	C632209xxx	–

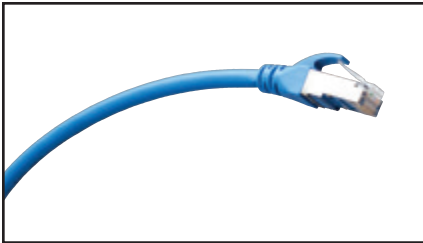
<b>CAT6+ Pigtail, Nonbonded-Pair, 4-pair, 24 AWG Solid, T568B-Open, CMP</b>						
15 ft (4.6 m)	–	–	C632306015	C632308015	C632309015	–
25 ft (7.6 m)	–	–	C632306025	C632308025	C632309025	–
35 ft (10.6 m)	–	–	C632306035	C632308035	C632309035	–
50 ft (15.2 m)	–	–	C632306050	C632308050	C632309050	–
xxx	–	–	C632306xxx	C632308xxx	C632309xxx	–

xxx = available 6 ft to 50 ft in increments of 1 ft, 55 ft to 295 ft in increments of 5 ft  
All pigtails also available in Bonded-Pair

To create a part number for any Modular Cord, please refer to page 14 for the Modular Cord Configuration Matrices.

## CAT6+ Shielded Modular Cords

### Patch Cords and Pigtails



CAT6+ Shielded Modular Cord

The CAT6+ Shielded Modular Cords are 4-pair 24 AWG F/UTP modular cords designed to be used within the Belden IBDN 2400 Shielded System. These modular cords offer the best combination of transmission performance and shielding integrity.

#### Features

- Made with small diameter for greater flexibility and higher density installations
- Solid conductors 24 AWG improve attenuation and are needed in long patch cords and

pigtails to eliminate the need for cable de-rating in open-office cabling

- Improved strain relief and a flexible boot for optimum protection in high-density installations
- Wrap-around label on each cord for easier product identification and length sorting

#### Benefits

- Exceeds TIA transmission and mechanical performance requirements
- Excellent shielding integrity per TIA-607-B

### CAT6+ Modular Cords

Description	Belden Part Number			
	Blue	Gray	White	Black
<b>CAT6+ Shielded Modular Cords, 4-pair, 24 AWG Solid, T568A/B–T568A/B, CMR</b>				
2ft (0.6 m)	C6F1106002	C6F1108002	C6F1109002	C6F1100002
4ft (1.2 m)	C6F1106004	C6F1108004	C6F1109004	C6F1100004
7ft (2.1 m)	C6F1106007	C6F1108007	C6F1109007	C6F1100007
10ft (3.0 m)	C6F1106010	C6F1108010	C6F1109010	C6F1100010
15ft (4.6 m)	C6F1106015	C6F1108015	C6F1109015	C6F1100015
25ft (7.6 m)	C6F1106025	C6F1108025	C6F1109025	C6F1100025
<b>CAT6+ Shielded Pigtails, 4-pair, 24 AWG Solid, T568A–Open, CMR</b>				
15ft (4.6 m)	C6F1206015	C6F1208015	–	–
25ft (7.6 m)	C6F1206025	C6F1208025	–	–
35ft (10.6 m)	C6F1206035	C6F1208035	–	–
50ft (15.2 m)	C6F1206050	C6F1208050	–	–
<b>CAT6 Shielded Pigtails, 4-pair, 24 AWG Solid, T568B–Open, CMR</b>				
15ft (4.6 m)	C6F1306015	C6F1308015	–	–
25ft (7.6 m)	C6F1306025	C6F1308025	–	–
35ft (10.6 m)	C6F1306035	C6F1308035	–	–
50ft (15.2 m)	C6F1306050	C6F1308050	–	–

Additional lengths and colors may be available. Contact Customer Service for minimum order quantity information.