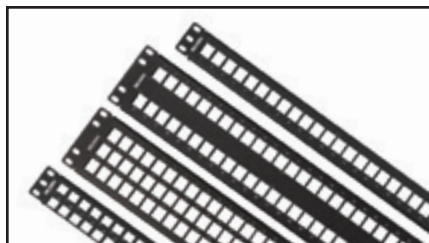


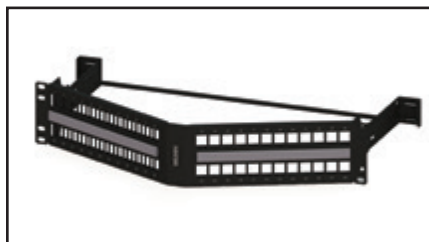
10GX KeyConnect Patch Panel (Preloaded)



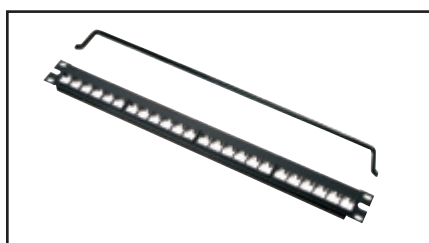
10GX KeyConnect Patch Panel (Empty)



KeyConnect AngleFlex Patch Panel (Empty)



KeyConnect Angled Patch Panel, 48-port, 2U (Empty)



Flex Patch Panel (Empty)

10GX Patch Panels

Preloaded and Modular

The 10GX Patch Panel is a fully loaded patch panel designed to be used within the IBDN 10GX System. The 10GX Patch Panel features the revolutionary 10GX Connector, specifically designed to meet the difficult challenges of 10 Gb/s transmission. 10GX Patch Panels are available in high-density options such as 24 ports in 1U or 48 ports in 2U, but the phenomenal ANEXT performance of the 10GX Connector has allowed Belden to also support an ultra high-density option offering the 10GX Ultra High-Density Patch Panel supporting 48 ports in 1U. The unmatched Beyond 10G™ performance exceeds all parameters specified in the Category 6A standard. All performance characteristics including ANEXT, NEXT, FEXT, Insertion Loss and Return Loss have been set to guarantee transmission performance up to 625 MHz.

KeyConnect Patch Panels are robust all-metal modular patch panels that provide a flexible, versatile and high-density termination solution for Data Center and Telecommunications Room

installations. The modular KeyConnect Patch Panels are available in 24-port/1U, 48-port/2U, 72-port/2U and 48-port/1U configurations.

The KeyConnect Patch Panel series also includes the unique AngleFlex Patch Panel available in 24-port/1U and 48-port/2U configurations. Patent-pending removable angled inserts provide intuitive left, right or bi-directional patch cord routing and more efficient switch connection. Angled inserts eliminate the need for horizontal cable management, for a 27% space savings per rack.

The KeyConnect and AngleFlex panels can be configured using 10GX KeyConnect Modular Jacks or Multimedia Modules.

The Flex Patch Panel series is available in 24-port/1U and 48-port/2U configurations, and is designed to be populated using MDVO-Style 10GX Modular Jacks or Multimedia Modules.

10GX Patch Panels

| Description | Belden Part Number |
|--|--------------------|
| 10GX KeyConnect Patch Panels (Preloaded) | |
| 10GX KeyConnect Patch Panel, 24-port, 1U, Titanium (Preloaded) | AX103254 |
| 10GX KeyConnect Patch Panel, 48-port, 2U, Titanium (Preloaded) | AX103256 |
| 10GX Ultra High-Density Patch Panel (Preloaded) | |
| 10GX Ultra High-Density Patch Panel, 1U, 48-port, Titanium (Preloaded) | AX103264 |
| 10GX KeyConnect Angled Patch Panel (Preloaded) | |
| 10GX KeyConnect Angled Patch Panel, 24 port, 1U, Black (Preloaded) | AX105363 |
| 10GX KeyConnect Angled Patch Panel, 48 port, 2U, Black (Preloaded) | AX105364 |
| 10GX KeyConnect Angled Patch Panel, 48 port, 1U, Black (Preloaded) | AX105365 |

KeyConnect Modular Patch Panels

| Description | Belden Part Number |
|--|--------------------|
| KeyConnect Modular Patch Panels (Empty) | |
| KeyConnect Patch Panel, 24-port, 1U, Black (Empty) | AX103114 |
| KeyConnect Patch Panel, 48-port, 2U, Black (Empty) | AX103115 |
| KeyConnect Patch Panel, 72-port, 2U, Black (Empty) | AX103116 |
| KeyConnect Patch Panel, 48-port, 1U, Black (Empty) | AX103121 |
| KeyConnect AngleFlex Modular Patch Panels (Empty) | |
| KeyConnect AngleFlex Patch Panel, 24-port, 1U, Black (Empty) | AX103248 |
| KeyConnect AngleFlex Patch Panel, 48-port, 2U, Black (Empty) | AX103249 |
| KeyConnect Angled Modular Patch Panels (Empty) | |
| KeyConnect Angled Patch Panel, 24 port, 1U, Black (Empty) | AX104599 |
| KeyConnect Angled Patch Panel, 48 port, 2U, Black (Empty) | AX104601 |
| KeyConnect Angled Patch Panel, 48 port, 1U, Black (Empty) | AX104600 |

Modular Patch Panels MDVO-Style

| Description | Belden Part Number |
|--|--------------------|
| Flex Patch Panels (Empty) | |
| Flex Patch Panel, 24-port, 1U, Black (Empty) | AX101456 |
| Flex Patch Panel, 48-port, 2U, Black (Empty) | AX101458 |

Faster.
Easier.
Better.



10GX Pre-Terminated Cabling System

Cable Assemblies, Couplers, Patch Panels

The 10GX Pre-Terminated Cabling System delivers rapid deployment coupled with guaranteed Category 6A performance and headroom, without the need for tradeoffs or compromise in performance and reliability. Bringing a new level of ease and convenience to cabling system design, ordering and installation, the system allows users to deploy their high-performance 10 Gigabit networks with optimal speed and efficiency.

Proven modular components are the cornerstone of the system. These include the 10GX Pre-Terminated Cable Assemblies and the 10GX RJ45 Modular Couplers. These components rely on unique enabling technologies: Belden's Bonded-Pair

technologies ensure that the cable assemblies boast exceptional structural stability and unfailing electrical performance; and the patent-pending Dual-FieX design ensures controlled plug/jack mated connection on both sides of the coupler to provide an uninterrupted electrical path for superior connector reliability and transmission performance.

With simple planning, easy ordering and rapid delivery, the 10GX Pre-Terminated Cabling System can reduce installation time and labor costs by as much as 90 percent. In addition, this "green" system provides for plug-and-play installation and component reusability, resulting in lower installed cost and less waste.



10GX Pre-Terminated Cable Assemblies



10GX RJ45 Coupler

10GX Cable Assemblies

| Description | Belden Part Number | |
|---|--------------------|---------------|
| | 6-Cable | 8-Cable |
| 10GX Pre-Terminated Cable Assembly, Bonded-Pair, 4-Pair, 24 AWG Solid, T568A/B-T568A/B | | |
| CMR, Black | CA21100xxxA06 | CA21100xxxA08 |
| CMR, Blue | CA21106xxxA06 | CA21106xxxA08 |
| CMR, White | CA21109xxxA06 | CA21109xxxA08 |
| CMP, Black | CA22100xxxA06 | CA22100xxxA08 |
| CMP, Blue | CA22106xxxA06 | CA22106xxxA08 |
| CMP, White | CA22109xxxA06 | CA22109xxxA08 |

Use xxx to specify length in feet - 006-100 ft in increments of 1 ft - 105-295 ft in increments of 5 ft

10GX KeyConnect Patch Panels

| Description | Belden Part Number |
|---|--------------------|
| 10GX KeyConnect Coupler Patch Panels (Preloaded) | |
| 10GX KeyConnect Coupler Patch Panel, 24-port, 1U, Titanium (Preloaded) | AX104141 |
| 10GX KeyConnect Coupler Patch Panel, 48-port, 2U, Titanium (Preloaded) | AX104142 |
| 10GX KeyConnect Coupler Patch Panel, 48-port, 1U, Titanium (Preloaded) | AX104592 |
| 10GX KeyConnect AngleFlex Coupler Patch Panel, 24-port, 1U, Black (Preloaded) | AX104569 |
| 10GX KeyConnect AngleFlex Coupler Patch Panel, 48-port, 2U, Black (Preloaded) | AX104571 |
| 10GX KeyConnect Angled Coupler Patch Panel (Preloaded) | |
| 10GX KeyConnect Angled Coupler Patch Panel, 24 port, 1U, Black (Preloaded) | AX105300 |
| 10GX KeyConnect Angled Coupler Patch Panel, 48 port, 2U, Black (Preloaded) | AX105301 |
| 10GX KeyConnect Angled Coupler Patch Panel, 48 port, 1U, Black (Preloaded) | AX105348 |
| 10GX KeyConnect Vertical Mount Patch Panel (Preloaded) | |
| 10GX KeyConnect Vertical Mount Patch Panel, 8 Port, Black (Preloaded) | AX105366 |

Empty Patch Panels can be used when colored couplers are used

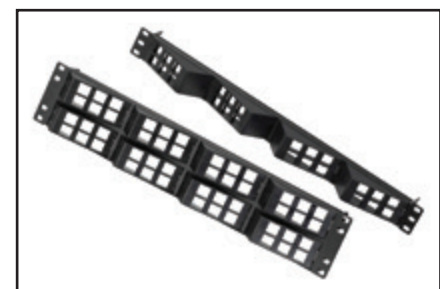


10GX KeyConnect Patch Panels (Preloaded)

10GX KeyConnect RJ Coupler

| Belden Part Number | | | | | | |
|--------------------|----------|----------|----------|----------|----------|----------|
| Orange | Red | Yellow | Green | Blue | White | Black |
| AX104015 | AX104016 | AX104017 | AX104018 | AX104019 | AX104023 | AX104024 |

Complete the 10GX Pre-Terminated System with 10GX Modular Cords, see page 13 for ordering information.



KeyConnect AngleFlex Patch Panels (Empty)